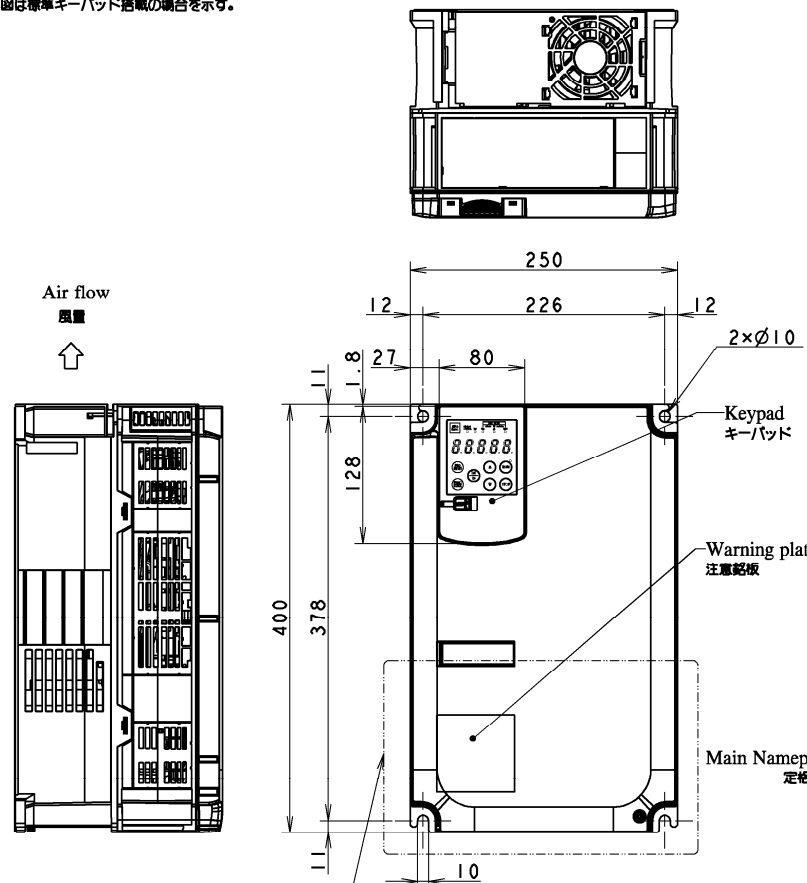
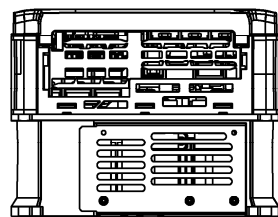


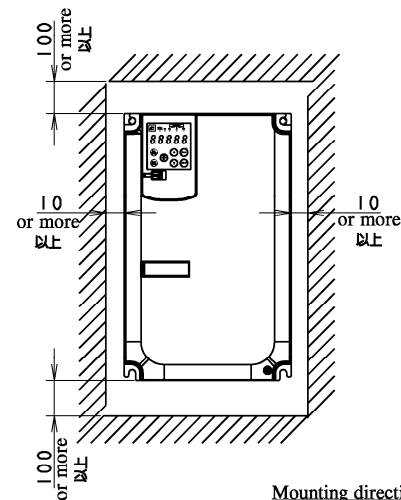
The representative model "FRN15G2□-2#" is shown.
 代表機種"FRN15G2□-2#"を示す。
 This figure shows the case where the standard keypad is installed.
 本図は標準キーパッド搭載の場合を示す。



Refer to (2/2)
(2/2)参照



(SCL 1:5)



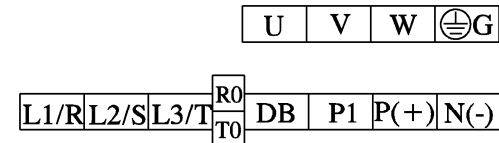
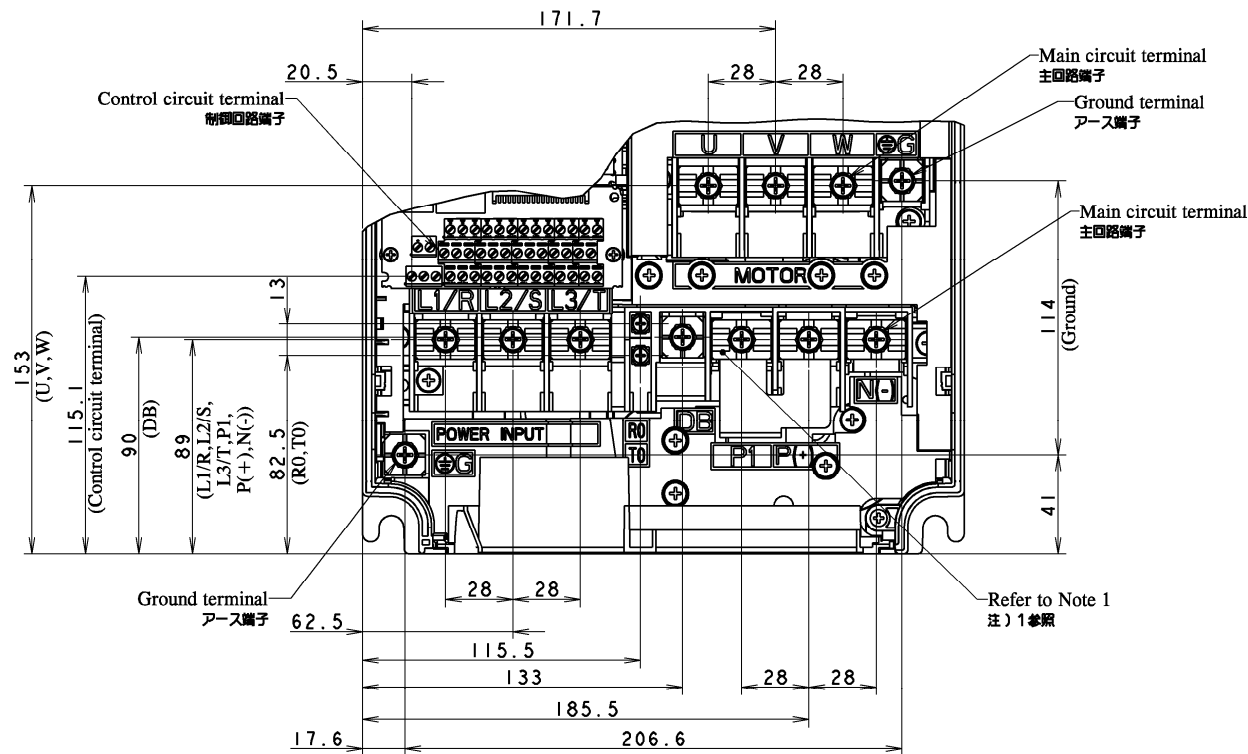
Mounting direction and clearance
 取り付け方向と取付部品取付禁止領域

Application Type 適用形式		Air flow 風量 m ³ /min	Approx. Mass 概略質量[kg]		Specifications 仕様	
			□ : S	□ : E	Enclosure color 外被色	Degree of protection 保護構造
FRN15G2□-2#	FRN0075G2□-2#	1.50	11	12	Black	IP20 (IEC 60529)
FRN15G2□-4#	FRN0038G2□-4#	1.50	10	11		
FRN18.5G2□-4#	FRN0045G2□-4#	1.50	11			

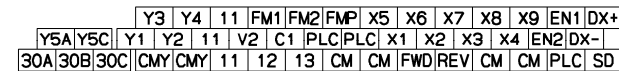
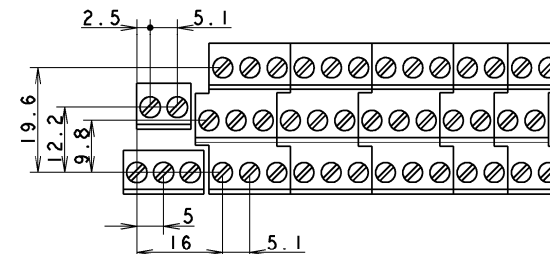
□: Structural variation
 □: 構造バリエーション
 #: Destination
 #: 仕向け先

DIMENSIONS IN mm

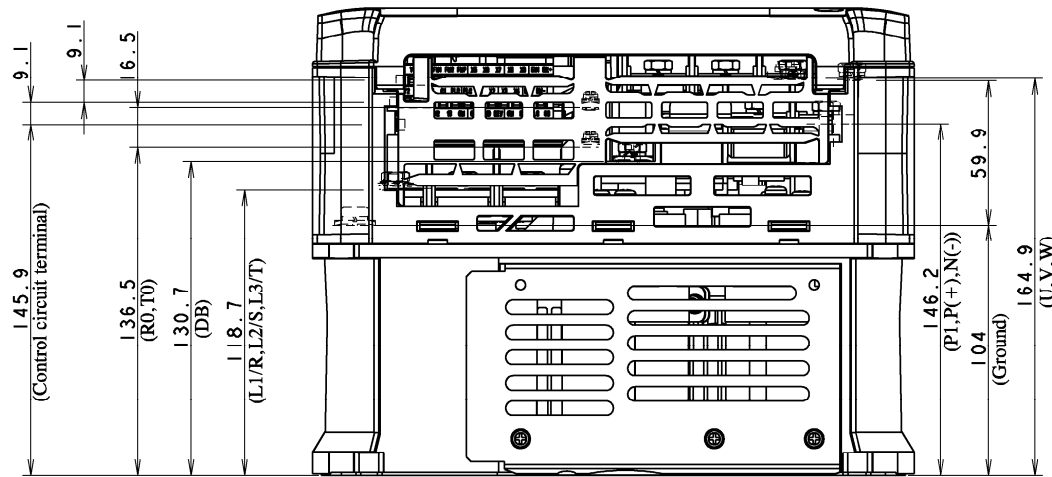
REVISEMENTS	DATE	NAME	APPROVED	TITLE	External Dimensions 外形図 FRENIC-MEGA (G2)	DWG. NO. SA498760(1/2)
	DRAWN	2021-03-02				
	CHECKED	2021-03-02				
Fuji Electric Co., Ltd.			REF.			



Main circuit terminal
主回路端子詳細



Control circuit terminal (SCL 1:1)
制御回路端子詳細



Terminal location
端子配置
(SCL 1:2.2)

Note
注)

- 1. Remove the short-bar, if connecting a DC reactor.
DCリアクトルを接続する場合は、短絡棒体を取外すこと。

Connection Detail 端子詳細			
	Terminal No. 端子記号	Size ネジサイズ	Tightening torque 締付トルク (N・m)
Source(Input)	電源入力	L1/R, L2/S, L3/T	M6 5.8
Output	出力	U, V, W	
DC link reactor	DCリアクトル	P1, P(+)	
Braking resistor	制動抵抗器	P(+), DB	
DC power supply	直流電源入力	P(+), N(-)	
Ground	アース	G ⊕	M3.5 1.2
Auxiliary control power input	補助電源入力	R0, T0	
Control circuit terminal	制御回路端子	Except the above 上記以外	

DIMENSIONS IN mm

REVISIONS	DATE	NAME	APPROVED
	DRAWN	2021-03-02	
CHECKED	2021-03-02		
Fuji Electric Co., Ltd.			REF.

TITLE	External Dimensions 外形図	
	DWG. NO.	DWG. CODE
	FRENIC-MEGA (G2)	SA498760(2/2)